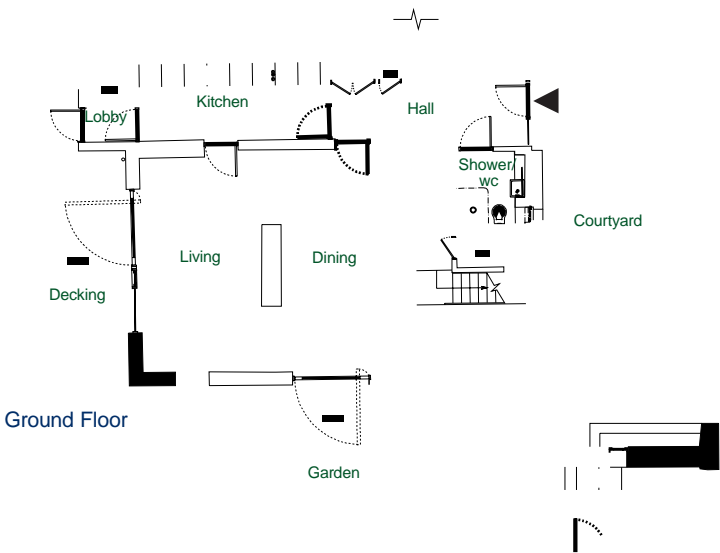
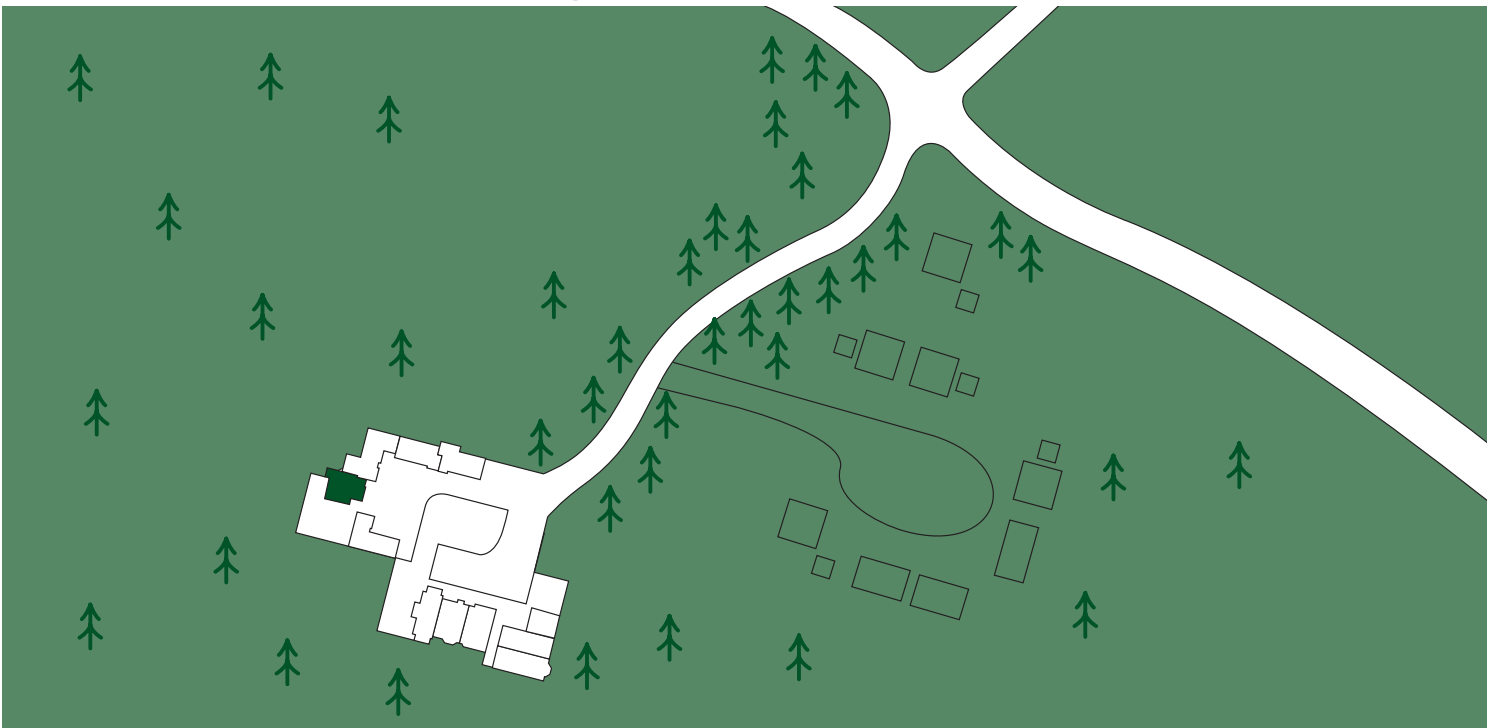


First Floor



Ground Floor



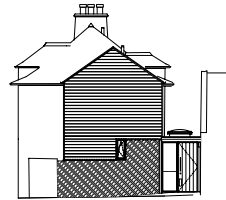
# Ravelrig House

## Cottage 2

### The Development

This is a charming grouping of five houses created from the former stables and cottages that once served Ravelrig House. Each house has been individually created. The courtyard is located to the west of the entrance driveway as approaching Ravelrig House.

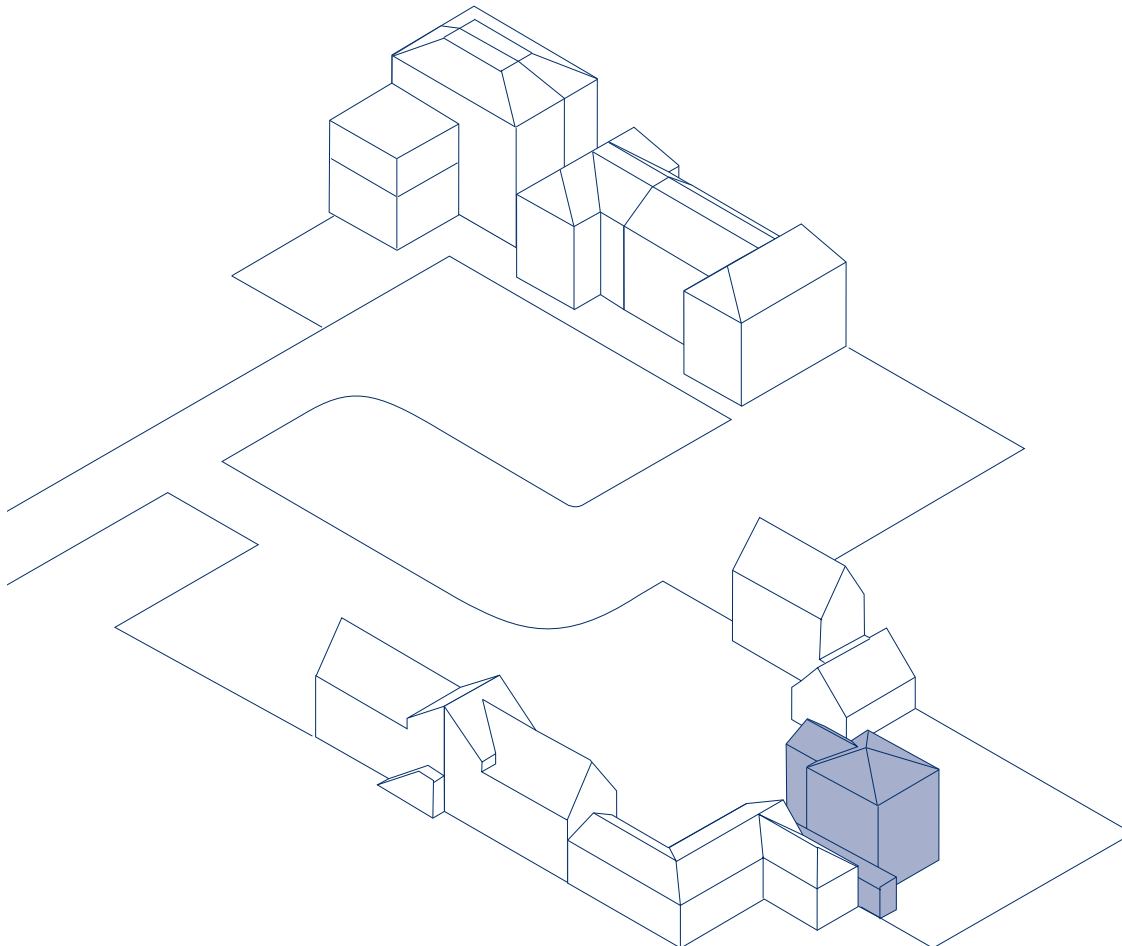
Dedicated private car parking is provided at the entranceway to the courtyard. The former stables properties, which are Listed Category 'B', form two sides of the courtyard and have been converted to three houses, with views over the paddock and gardens to the west.



### Cottage 2

A spacious well appointed two-storey property with a garden which wraps round the front and side of the Cottage. From the living and dining areas access can be gained to the sun deck and south and west facing parts of the garden by glazed patio doors.

The ground floor also includes a fully fitted galley style kitchen, storage, further hallway with washroom and staircase leading to the upper floor. The upper floor has two spacious bedrooms and bathroom.



### Ravelrig House

A gently sweeping driveway leads to the entrance forecourt of Ravelrig House. As the centrepiece of this magnificent landscape, Ravelrig House has been restored and converted to form six very individual homes, all with private gardens leading onto mature woodland. Each house has been individually created to offer exceptional character. Dedicated car parking is located in the forecourt.

### Ravelrig Stables/Cottages

An intimate group of five cottages created in the former stables' wing around a courtyard. The courtyard is accessed off the driveway and situated to the west of Ravelrig House. The houses generally have two or three bedrooms, smaller in area than those in Ravelrig House, but all with gardens. Dedicated car parking is located adjacent to the courtyard.