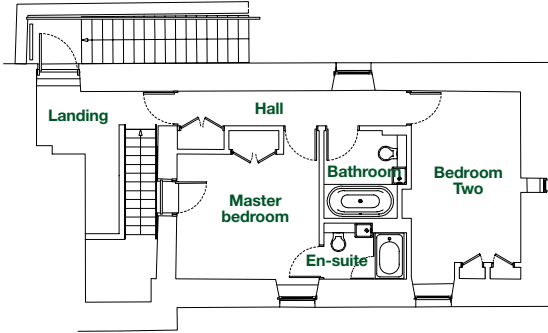


Ravelrig House

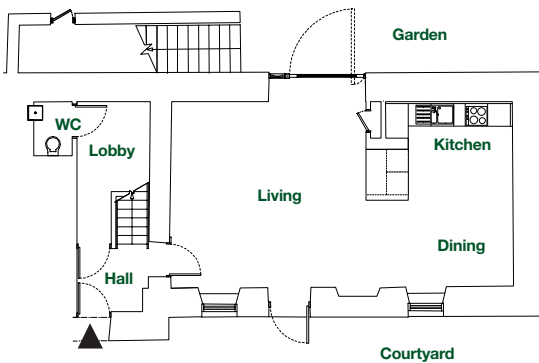
Stable House 3



Floor Plans



First Floor



Ground Floor

Room Dimensions & Floor Areas

Sitting Room	6.14 x 5.01	(20'2" x 16'5")
Kitchen / Dining	4.19 x 4.94	(13'9" x 16'2")
Master Bedroom	3.80 x 3.30	(12'5" x 10'10")
En-suite	2.19 x 1.48	(7'2" x 4'10")
Bedroom Two	3.14 x 5.42	(10'4" x 17'10")
Bathroom	2.19 x 2.32	(7'2" x 7'7")
Total Floor Area (includes voids/stairs)	112.80 sqm	(1255 sqft)

Sitting Room

Open plan room with sash and case windows and patio doors to the courtyard and garden.

Kitchen

Fitted with ample stylish storage units fitted with under wall unit lighting, 1.5 bowl stainless steel sink, electric oven, gas hob, integrated cooker hood, fridge and freezer, dishwasher, (combination washing machine/tumble dryer located in utility area) and built-in microwave.

Master Bedroom

A well-lit and well proportioned room with built-in wardrobes and en-suite facilities overlook the courtyard. Glazed door overlooking the entrance hallway.

Bedroom Two

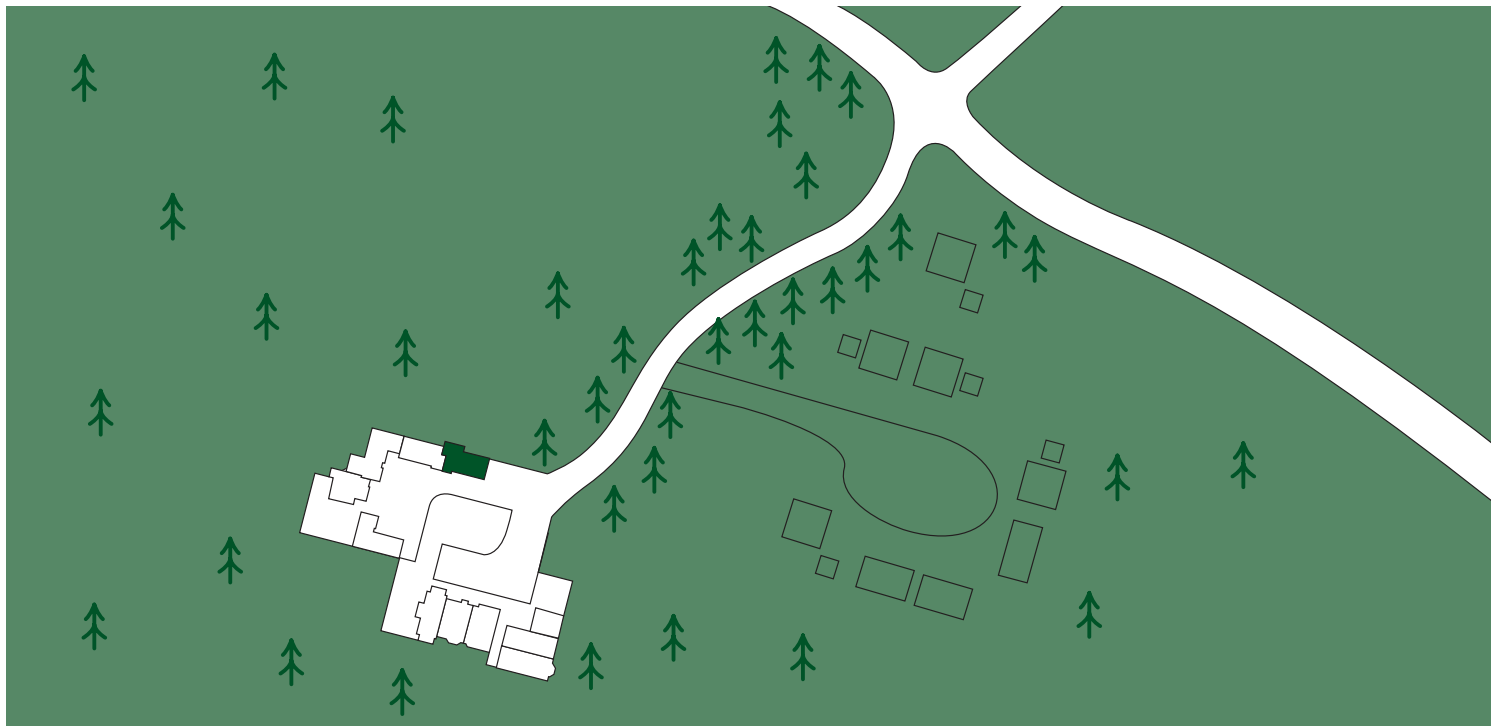
A bright double bedroom overlooking the courtyard.

Bathroom/En-Suite

All bathrooms, en-suite and WC have quality fittings comprising of white sanitary ware, chrome fittings, bath with Hansgrohe shower, vanity unit with wash hand basin, WC with enclosed cistern. On the ground floor there is a separate WC.

Note

Premier Burrell Ltd operates a policy of continuous product development and reserves the right to change individual features and specification of the apartments without notice. Any variations will only be made to a similar standard, consequently illustrations, plans and sizes (metric and imperial) are indicative and do not form part of any contract. consequently illustrations, plans and sizes (metric and imperial) are indicative and do not form part of any contract.



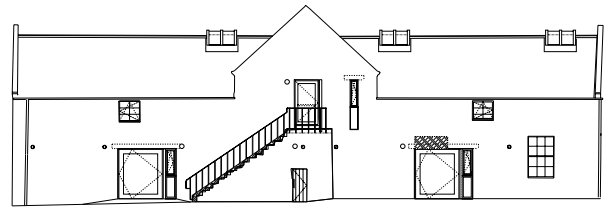
Ravelrig House

Stable House 3

The Development

This is a charming grouping of five houses created from the former stables and cottages that once served Ravelrig House. Each house has been individually created. The courtyard is located to the west of the entrance driveway as approaching Ravelrig House.

Dedicated private car parking is provided at the entranceway to the courtyard. The former stables properties, which are Listed Category 'B', form two sides of the courtyard and have been converted to three houses, with views over the paddock and gardens to the west.



Stable House 3

Enter from the Courtyard. Designated car parking is located adjacent to the properties. Entrance hall with utility room and WC off. Large open plan living room, dining, kitchen area with views over the courtyard on one side, and private garden and paddock beyond. This light and open living area has direct access to the secluded courtyard and also the private garden. An external garden store is located under the original stone staircase.

The staircase leads from the hallway to a landing, which also has access

to the garden via the original external stone staircase. There are two generous bedrooms, en-suite shower room, family bathroom and storage. The landing has been designed as a computer/study area if desired. The storey hallway is overlooked from the bedroom.

The house is finished to a high specification, with fully equipped Kitchens by ALNO. The two storey hallway is overlooked from the bedroom.

Ravelrig House

A gently sweeping driveway leads to the entrance forecourt of Ravelrig House. As the centrepiece of this magnificent landscape, Ravelrig House has been restored and converted to form six very individual homes, all with private gardens leading onto mature woodland. Each house has been individually created to offer exceptional character. Dedicated car parking is located in the forecourt.

Ravelrig Stables/Cottages

An intimate group of five cottages created in the former stables' wing around a courtyard. The courtyard is accessed off the driveway and situated to the west of Ravelrig House. The houses generally have two or three bedrooms, smaller in area than those in Ravelrig House, but all with gardens. Dedicated car parking is located adjacent to the courtyard.

